

**TORO****Count on it.**

# Network VPE Satellites



**The Network VPE Satellite combines modular flexibility, ease of use and increased control in a single controller.**

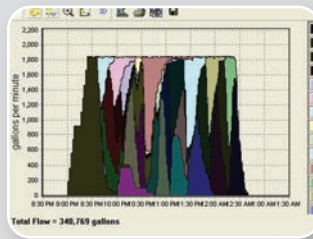
Available in configurations from 16 to 64 stations and in eight-station increments to meet your needs. Optional station switches and surge protection provide simple operation and added security.

## Features & Benefits:



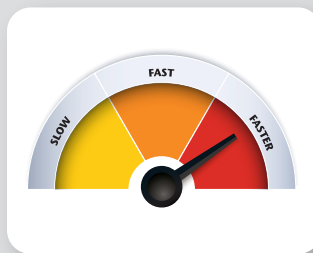
### INTUITIVE USER INTERFACE

Easy to use interface with backlit display for better low-light viewing. Large 128 x 64 LCS screen display menu.



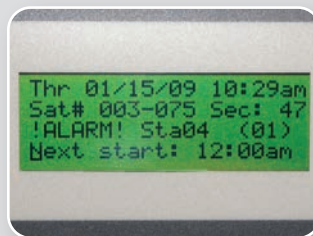
### STATION BASED FLOW MANAGEMENT

Reduces night time water window and optimises pump efficiency. Central irrigation programs (greens, tees, etc.) are available from the satellite faceplate for manual watering and field adjustments.



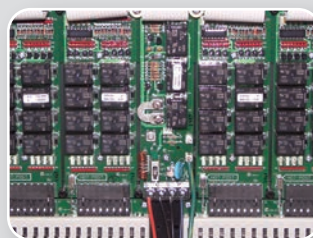
### TWO WAY COMMUNICATION WITH IMPROVED DOWNLOAD TIME

Upload changes and programs made in the field automatically. Saves programs in case of communications loss. Variable length (VL) communication reduces download time by up to 80% from previous versions.



### INFORMATIVE DISPLAY

Display shows time-of-day, day-of-week, programming and operational status in a multi-line format.



### MODULARITY PROVIDES FLEXIBILITY

16-64 stations in 8-station increments – 16 programs – individual station control and you can run up to 16 stations simultaneously.



# Network VPE Satellites



### Warranty

One Year

### Network LTC Plus Upgrade Kit

**CODE: 102-9740**

**KIT CONTAINS:**

- Network VPE Faceplate
- Network LTC Plus To Network VPE Power Distribution Board
- Cable And Hardware

### Specifications

#### ELECTRICAL

**Input Power:**

- 216 VAC to 264 VAC, 50 Hz
  - 0.10 amps (no load) 230 VAC
  - 0.60 amps (max load) 230 VAC

**Output Power:**

- 24 VAC
  - 3.0 amps (max total load)
- UL Listed

#### DIMENSIONS

- Plastic Cabinet:  
41cm W x 99cm H x 41cm D

#### ADDITIONAL SPECIFICATIONS

- Operating temperature: -10°C to 60°C
- Storage temperature: -30°C to 65°C
- Humidity: 0% to 95% RH (non-condensing)

### Additional Features

- Optional output switches and surge protection
- Sturdy plastic pedestal
- Supports wireline or radio communications or hybrid communication of both for increased flexibility and cost effectiveness
- 16 irrigation programs
- Pause, Resume and Stop functions
- Supports run times from 1 second to 23hrs, 59 mins and 59 secs.
- Percent adjust from 1% to 900% (Station, Program, Satellite)
- Each output can be defined as an irrigation station or general application switch
- Non-volatile memory retains program information and satellite settings during power-off conditions. Battery back-up retains the satellite date and time

### Ordering Information

**10X-XXX6XX**

Description	Configuration		Cabinet	Output	Comm.	Options
10X	XX		X	6	X	X
100—Network VPE Satellite (115/230 VAC Input)	16—16 Stations 32—32 Stations 48—48 Stations 64—64 Stations	24—24 Stations 40—40 Stations 56—56 Stations	P—Plastic, Green	6—24 VAC	A—Stand Alone* M—2-Way Wire Modem R—UHF Radio**	0—No Options 4—Large-capacity Terminal Block w/Add'l Surge & Switches

**Example:** When ordering a 24-station, 2-way wire VPE Satellite in a plastic cabinet with large-capacity terminal block additional surge and switches, you would specify: 100-24P6M4

\* Stand Alone option only available in 16 and 40 stations.

\*\* Radio option only available in 16 and 40 stations (Level 4 surge protection only).